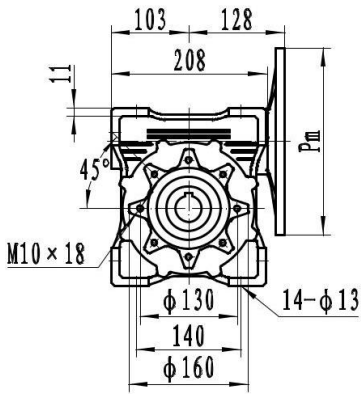
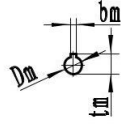


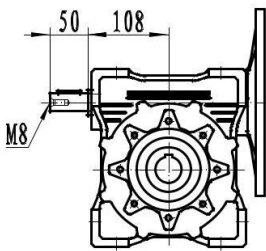
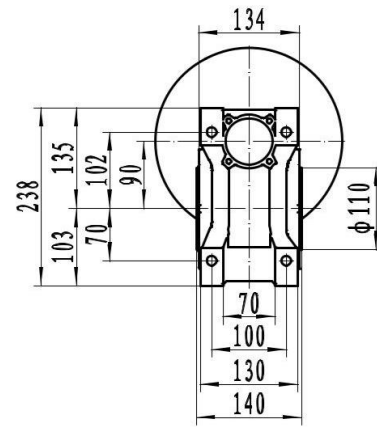
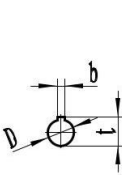
PDW 090



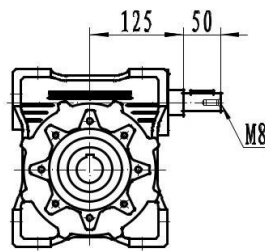
Входной вал



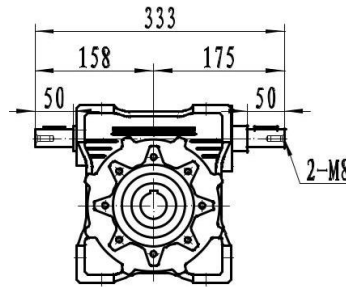
Выходной вал



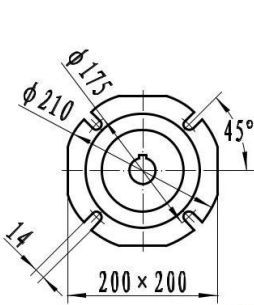
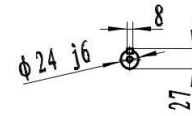
PDW...E



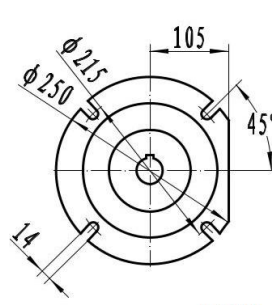
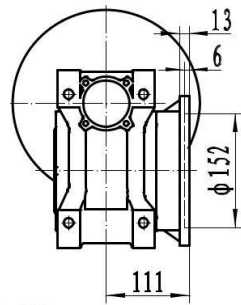
PDW...R



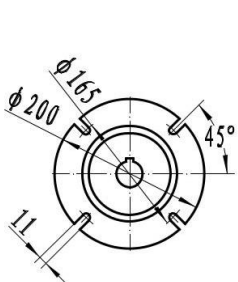
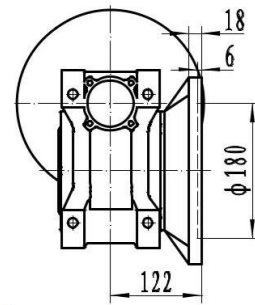
PDW...E/R



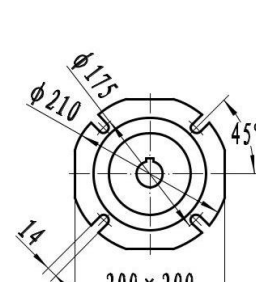
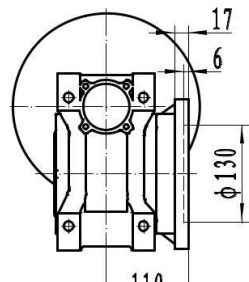
PDW...FA



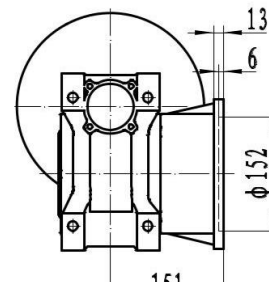
PDW...FB



PDW...FC



PDW...FD



D H7	b D10	t
35	10	38.3
(38)	(10)	(41.3)

	Pm	Dm	bm	tm
80B5	200	19	6	21.8
80B14	120			
90B5	200	24	8	27.3
90B14	140			
100/112B5	250	28	8	31.3
100/112B14	160			